

WINDOW NOTES:

1. WINDOW SIZES LISTED ARE NOMINAL, GENERAL, OVERALL SIZES AND ARE PROVIDED AS A GUIDE FOR THE BUILDER AND WINDOW SUPPLIER.
2. EGRESS WINDOW LOCATIONS ARE NOTED ON THE FLOOR PLANS AND IT IS THE RESPONSIBILITY OF THE BUILDER AND WINDOW SUPPLIER/MANUFACTURER TO ENSURE THAT SUCH WINDOWS PURCHASED AND INSTALLED ARE IN ACCORDANCE TO THE FLORIDA BUILDING CODE REQUIREMENTS FOR EMERGENCY EGRESS.
3. ALL WINDOWS IN "HAZARDOUS LOCATIONS" (AS PER SECTION R308.4 IN THE FBC, RESIDENTIAL) ARE TO HAVE TEMPERED GLASS.
4. VERIFY ALL ROUGH OPENINGS AND NOTIFY THE ARCHITECT OF ANY DISCREPANCIES.
5. REFER TO PLANS AND ELEVATIONS FOR ALL SWING DIRECTIONS FOR CASEMENTS. VERIFY WITH BUILDER AND/OR OWNER.
6. VERIFY MANUFACTURER, SERIES, MATERIAL, GLASS TYPE, AND ANY DIVIDED MUNTIN PATTERNS WITH BUILDER AND/OR OWNER.

WALL LEGEND

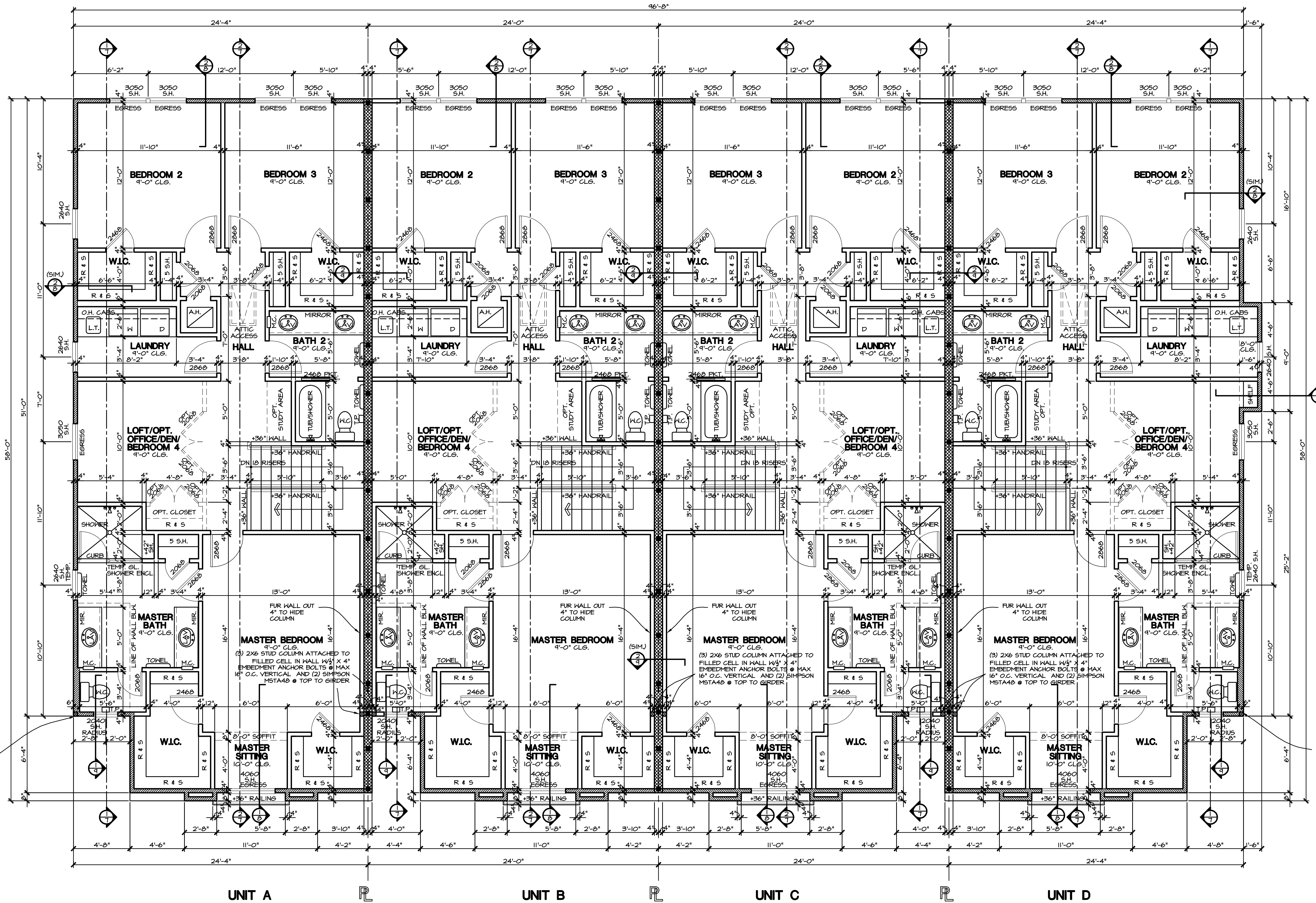
- T.O. MASONRY WALL @ 20'-4 3/4" A.F.F.
- FRAME BEARING WALL
- (1) #5 @ IN FILLED CELL
- (2) 48" O.C. (MAX) UNO (SEE PLAN LOCATIONS)

HYDROSTATIC OPENING CALCULATIONS

FLOOR AREA OF EACH GARAGE BELOW FLOOD = 421 SQ. FT. (EACH UNIT)
 NET HYDROSTATIC OPENINGS REQUIRED = 421 SQ. INCHES
 8" X 16" CONC. BLOCK TURNED ON SIDE = 64 SQ. INCHES FREE AREA EACH
 GARAGE DOOR VENT = 203 SQ. INCHES FREE AREA (X2) = 406 SQ. INCHES
 TOTAL OF (1) CONC. BLOCK VENT AND (2) GARAGE DOOR VENTS REQUIRED
 TOTAL = 406 SQ. INCHES + 64 SQ. INCHES = 470 SQ. INCHES (EACH UNIT)

ALL ELECTRICAL, MECHANICAL,
 & PLUMBING TO MEET BASE FLOOD ELEVATION

APPROVED PRODUCTS LIST			
PRODUCT CATEGORY	SUB CATEGORY	MANUFACTURER	STATE OF FLORIDA APPROVAL NUMBER
ROOFING	ROOFING TILES	SANTA FE	FL2019-R5
WINDOWS	SINGLE HUNG	PST INDUSTRIES	FL2764-R3
EXTERIOR DOOR	SHINGING EXTERIOR DOORS	PLAST PRO	FL3030-R3
EXTERIOR DOOR	SLIDING GLASS DOOR	PST INDUSTRIES	FL251
EXTERIOR DOOR	SECTIONAL DOOR	CLOPAT BUILDING PRODUCTS CO.	FL10306



UPPER LEVEL FLOOR PLAN
 SCALE 1/4" = 1'-0"

issue date: 3-10-14
 file: _____
 design by: MAE
 drawn by: MAE
 checked by: RPG
 revisions:
 #1 date: _____
 #2 date: _____
 #3 date: _____
 #4 date: _____

INTEGRAL ENGINEERING, INC.
 1100 N. W. 10th St., Suite 100
 Ft. Lauderdale, FL 33304
 Phone: (954) 561-1111
 Fax: (954) 561-1112
 www.integralengineering.com

RITTON & ASSOCIATES ARCHITECTS, LLC
 A NEW TOWN HOUSE BUILDING FOR
CASTILLO HOUSING CORP.
 NW CORNER OF N. TRASK ST. & W. GRAY ST. - TAMPA, FLORIDA - 33609
 3802 gunn hwy. suite B - tampa, florida - 33618 - 813.960.9361 - www.griffonarchitects.com - fl. lic. ad26001048